

**B5D**®



Software for  
quantity take-off

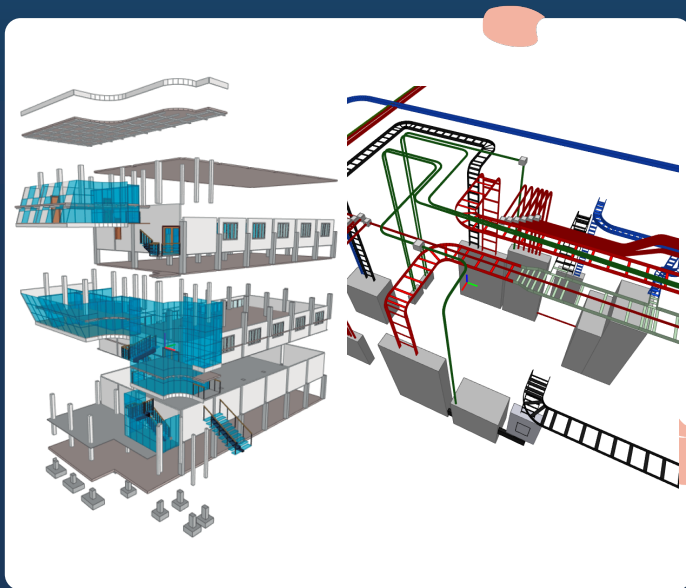
**BIM**

Deconstructing projects, building a  
better future.

# BIM quantity take-off software for IFC files.

Reduce time spent on quantity take-off and obtain reliable results.

B5D<sup>®</sup> transforms traditional processes, becoming a unique and essential tool within your processes with BIM methodology.



# Transform your BIM models into Construction Task Catalog. Our software extracts the information from the modeled objects and associates them with your Construction Task, allowing to generate detail QTO in an easy way.

You will be able to read IFC files and convert them into Construction Task Catalog. Our software extracts the information from the modeled objects and associates them with your Construction Task, allowing to generate detail QTO in an easy way.

The screenshot displays the software interface with several key components:

- Left Panel (Tree View):** Shows a hierarchical structure of the BIM model, including levels (A.1, A.2, A.3), sections (SECCIONES), and various task categories like 'PROCESOS DE TIERRA Y MATERIAS', 'ESTRUCTURAS', and 'MANTENIMIENTO DE OBRAS'. It includes a search bar and filters for 'VISTA', 'OBJETOS', 'SECCIONES', 'MEDIDAS', 'CAMBIOS', and 'FILTROS'.
- Top Panel (Configuration):** Contains settings for 'Configuración de filtros', 'Configuración de secciones', and 'Configuración de niveles'. It includes a 'Configuración de filtros' section with a table for 'Filtros' and a 'Configuración de secciones' section with a table for 'Secciones'.
- Right Panel (Task List):** Displays a list of tasks with columns for 'Tipo de elemento', 'Nombre', 'Descripción', 'Unidad', 'Cantidad', and 'Valor'. It includes a 'Tipo de elemento seleccionado' section and a 'Lista de elementos seleccionados' section.
- Bottom Panel (3D Model):** Shows a 3D model of a structure, likely a bridge or pier, with a red arrow pointing to a specific element. The model is rendered in a green wireframe style.
- Bottom Right Panel (Summary Table):** A table with columns for 'Detalle', 'Descripción de la medida', 'Unidad', 'Cantidad', and 'Valor'. It lists various construction tasks and their associated quantities and values.

# Standardize - Link - Quantify



Link multiple modeled objects to one or more Construction tasks with a simple drag and drop. Forget about manual work. You can easily replicate measurement standards in each project.

Take your results to the unit pricing software of your choice. This means 100% compatibility with any unit pricing software in the world, exchanging information will allow you to obtain structured, accurate and immediate quotes.



It doesn't matter what Level of Development (LOD) your BIM files are, whether they are simple or highly detailed elements. B5D<sup>®</sup> allows you to quantify any modeled object based on its properties; besides, you can assign materials.



LOD 100



LOD 200



LOD 300



LOD 400



LOD 500



Preliminares



Cimentación



Estructura



Albañilerías



Acabados

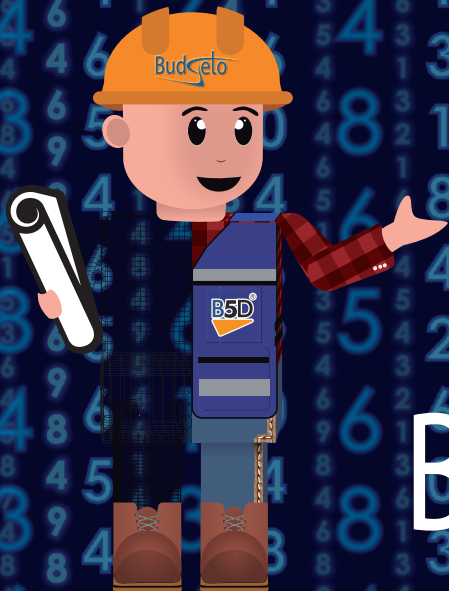


Instalaciones





Save time, improve accuracy and optimize your BIM processes at every stage of your construction projects.



# B5D<sup>®</sup>

is a product of

# Budgeto

Tu Solución al Costo

 [comercial@budgetomc.com](mailto:comercial@budgetomc.com)

 [@budgetotusolucionalcosto](#)

 [budgeto SA de CV](#)

 55 4755 3129  
55 7247 7787

 [BudgetoMex](#)

